

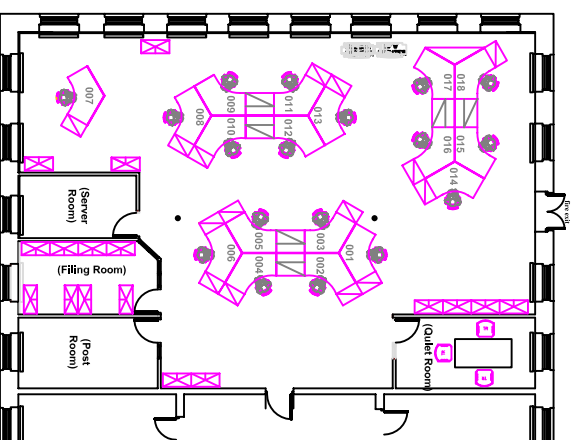
## SPACEPLANNING USING NEW FURNITURE IN A NEW BUILDING



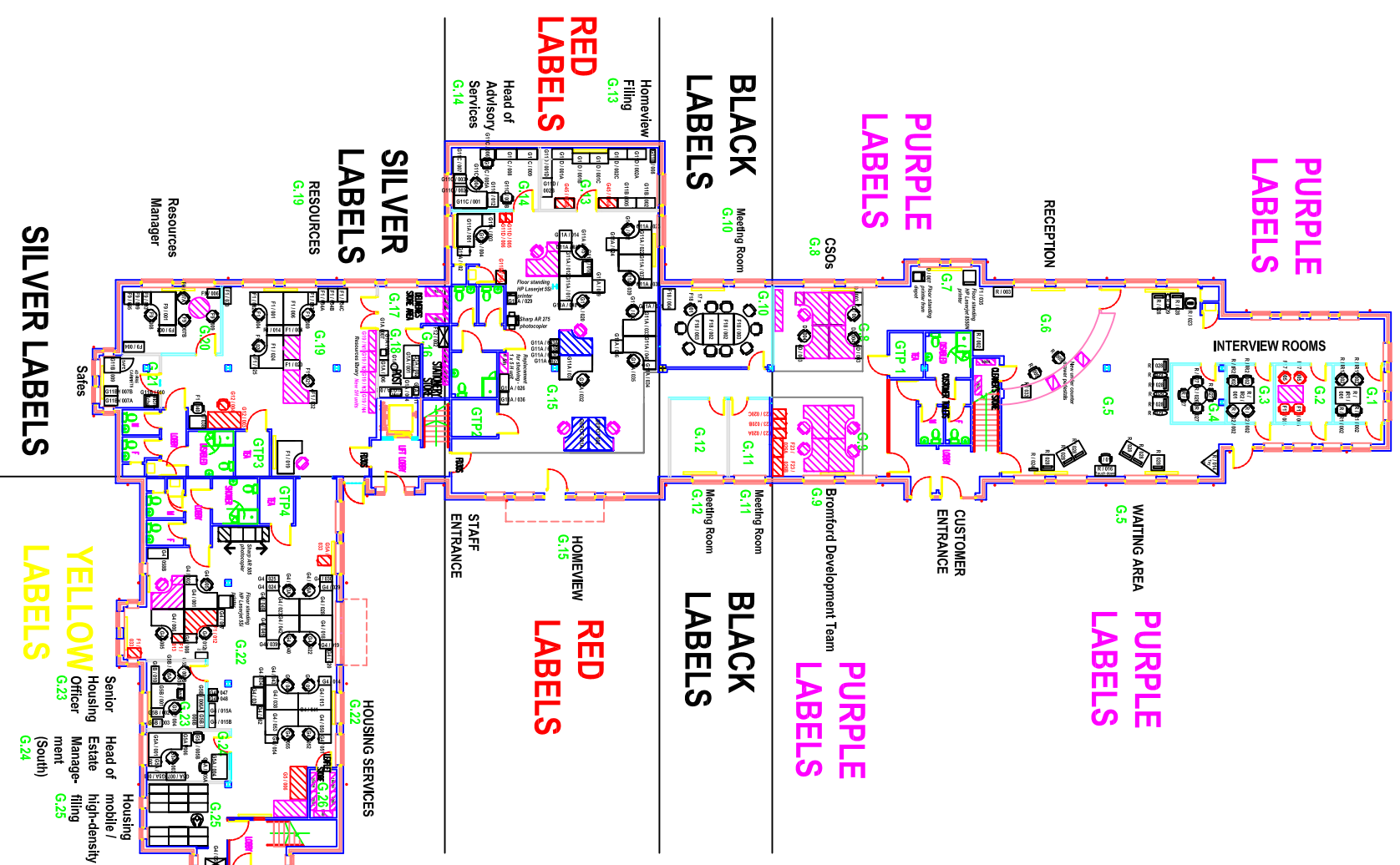
## 'BAND AID' SPACEPLANNING TO MAXIMISE OCCUPANCY



## SPACEPLANNING DESIGNED TO ENCOURAGE TEAM WORKING



## SPACEPLANNING FOR AN OFFICE MOVE USING EXISTING FURNITURE - EVERY PIECE OF FURNITURE LOGGED, BAR CODED AND COLOUR CODED



We are specialists in making the optimum use of space in modern (and not so modern) office buildings.

Our approach is based on two simple precepts:

- that offices should be planned to meet the needs of the people who work in them
- that the space planning solution should be appropriate to the organisation.

Anyone can draw up pretty pictures. We go beyond that and seek to understand the organisation and what management wants to achieve.

At a very simple level this may be squeezing in as many people as possible to avoid moving for a year or two. At another it might be to introduce major cultural change to the organisation.

Our planning solutions respond to these client needs.

It is very unusual for us not to be able to find improvements in the use of expensive office space.

For more information call Richard Buckley on **01285 851095**, e-mail [rbuckley@spaceplanner.co.uk](mailto:rbuckley@spaceplanner.co.uk) or visit [www.spaceplanner.co.uk](http://www.spaceplanner.co.uk).